



Rab11-FIP4 Polyclonal Antibody

Catalog No	YP-Ab-16213
Isotype	IgG
Reactivity	Human;Mouse
Applications	WB;IHC;IF;ELISA
Gene Name	RAB11FIP4
Protein Name	Rab11 family-interacting protein 4
Immunogen	The antiserum was produced against synthesized peptide derived from human RAB11FIP4. AA range:452-501
Specificity	Rab11-FIP4 Polyclonal Antibody detects endogenous levels of Rab11-FIP4 protein.
Formulation	Liquid in PBS containing 50% glycerol, 0.5% BSA and 0.02% sodium azide.
Source	Polyclonal, Rabbit,IgG
Purification	The antibody was affinity-purified from rabbit antiserum by affinity-chromatography using epitope-specific immunogen.
Dilution	WB: 1/500 - 1/2000. IHC: 1/100 - 1/300. ELISA: 1/40000.. IF 1:50-200
Concentration	1 mg/ml
Purity	≥90%
Storage Stability	-20°C/1 year
Synonyms	RAB11FIP4; ARFO2; KIAA1821; Rab11 family-interacting protein 4; FIP4-Rab11; Rab11-FIP4; Arfophilin-2
Observed Band	95kD
Cell Pathway	Endosome . Cytoplasm, cytoskeleton, spindle . Cytoplasm, cytoskeleton, microtubule organizing center, centrosome . Recycling endosome membrane ; Peripheral membrane protein. Cleavage furrow . Midbody . Cytoplasmic vesicle . Recruited to the cleavage furrow and the midbody during cytokinesis. .
Tissue Specificity	Present at high level in testis (at protein level). Weakly expressed in other tissues.
Function	function:A Rab11 effector protein acting in the endosomal trafficking.,similarity:Contains 1 EF-hand domain.,subcellular location:Colocalizes with RAB11A in the endocytic recycling compartment (ERC).,subunit:Homooligomer. Forms an heterooligomeric complex with RAB11FIP2, RAB11FIP3 and RAB11FIP5. Interacts with RAB11A that has been activated by GTP binding.,
Background	Proteins of the large Rab GTPase family (see RAB1A; MIM 179508) have regulatory roles in the formation, targeting, and fusion of intracellular transport vesicles. RAB11FIP4 is one of many proteins that interact with and regulate Rab GTPases (Hales et al., 2001 [PubMed 11495908]).[supplied by OMIM, Apr 2008],



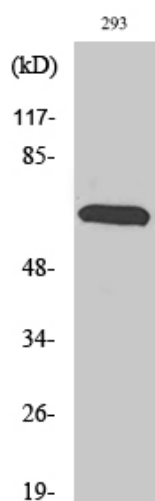
matters needing attention

Avoid repeated freezing and thawing!

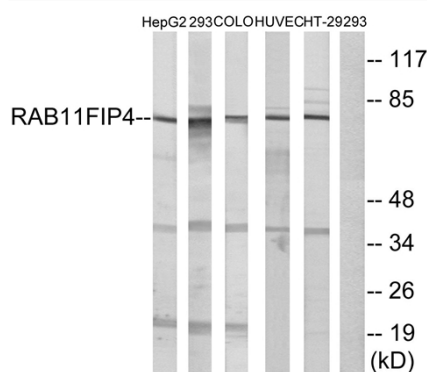
Usage suggestions

This product can be used in immunological reaction related experiments. For more information, please consult technical personnel.

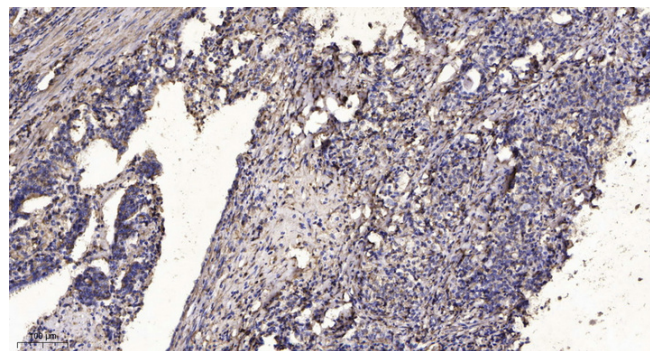
Products Images



Western Blot analysis of various cells using Rab11-FIP4 Polyclonal Antibody



Western blot analysis of lysates from 293, COLO, HUVEC, HepG2, and HT-29 cells, using RAB11FIP4 Antibody. The lane on the right is blocked with the synthesized peptide.



Immunohistochemical analysis of paraffin-embedded human Gastric adenocarcinoma. 1, Antibody was diluted at 1:200(4° overnight). 2, Tris-EDTA,pH9.0 was used for antigen retrieval. 3,Secondary antibody was diluted at 1:200(room temperature, 45min).